



P.O. Box 2956 · Syracuse · New York · 13220
 Phone: (315) 433-1150 Fax: (315) 433-1521
 Toll Free US & Canada (800) 334-0837
 Email: sales@infitec.com

FEATURES

- C/MOS Digital Circuitry
- Time Delays To 1000 Minutes
- Quality Low Cost Construction
- Fully Solid State
- No First Cycle Effect
- 1/4" Quick Connect Termination
- Low Cost
- .5% Repeat Accuracy
- Output Rated at 1 Ampere continuous, 10 Amperes Inrush

SPECIFICATIONS

1. Time Delay.

- 1.1 Type: C/MOS digital circuitry
- 1.2 Range: From .05 seconds to 1000 minutes. Fixed delay available (see page B8)
- 1.3 Repeat accuracy: $\pm 5\%$ under fixed conditions
- 1.4 Setting accuracy: $\pm 10\%$
- 1.5 Reset time: 100 milliseconds maximum
- 1.6 Recycle time: 100 milliseconds, 50 milliseconds after timing
- 1.7 Time delay vs. voltage and temperature: $\pm 2\%$

2. Input.

- 2.1 Operating voltage: 24, 120 & 230 VAC, 12 & 24/28 VDC
- 2.2 Tolerance: $\pm 20\%$ of nominal
- 2.3 Frequency: 50 - 60 Hertz

3. Output.

- 3.1 Type: Solid state
- 3.2 Form: SPST
- 3.3 Rating: 1 ampere maximum at 60°C (40 mA minimum or consult factory), 10 amperes inrush
- 3.4 Life: 100,000,000 operations minimum under full load

4. Protection.

- 4.1 Transient: ± 1500 volts for 150 microseconds
- 4.2 Polarity: DC units are reverse polarity protected
- 4.3 Dielectric breakdown: 1500 volts RMS minimum

5. Mechanical.

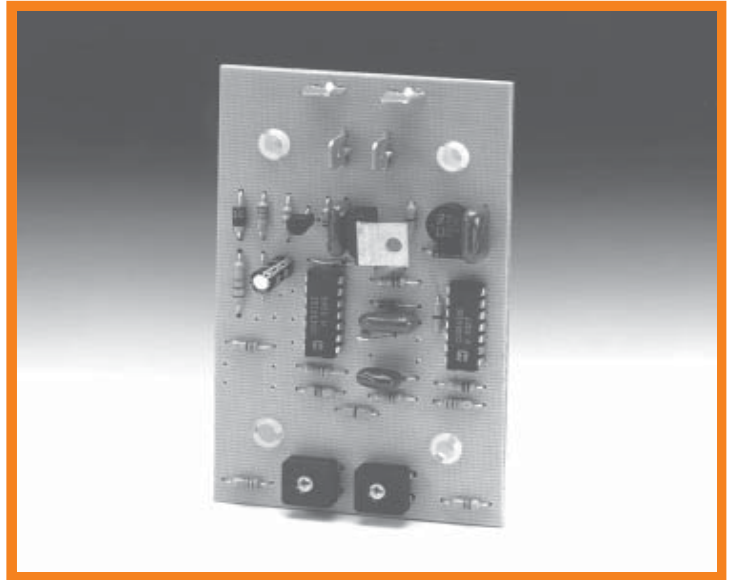
- 5.1 Mounting: #6 screw clearance (4 places)
- 5.2 Termination: 3/16" or 1/4" quick connect terminals
- 5.3 Style: Open board/surface mount

6. Environmental.

- 6.1 Operating temperature: -20°C to +80°C
- 6.2 Storage temperature: -30°C to +85°C

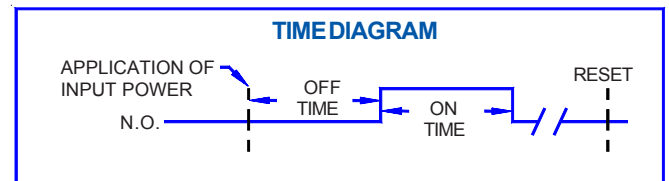
DISCONTINUED SERIES DISCONTINUED SERIES DISCONTINUED

CDIS/CRS SERIES OPEN BOARD/SOLID STATE TIME DELAY CONTROL SURFACE MOUNT



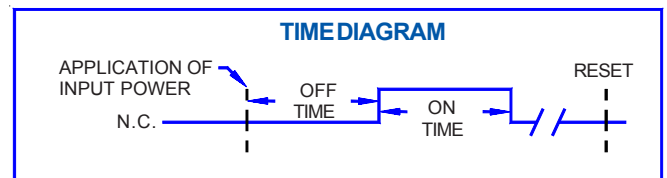
MODE OF OPERATION DELAYED INTERVAL

Upon application of power to the input terminals, the **OFF** delay begins. Upon completion of the **OFF** delay, the output contact transfers and the **ON** delay begins. Upon completion of the **ON** delay, the output contact reverts back to its original position. Reset is accomplished by removal of input power.

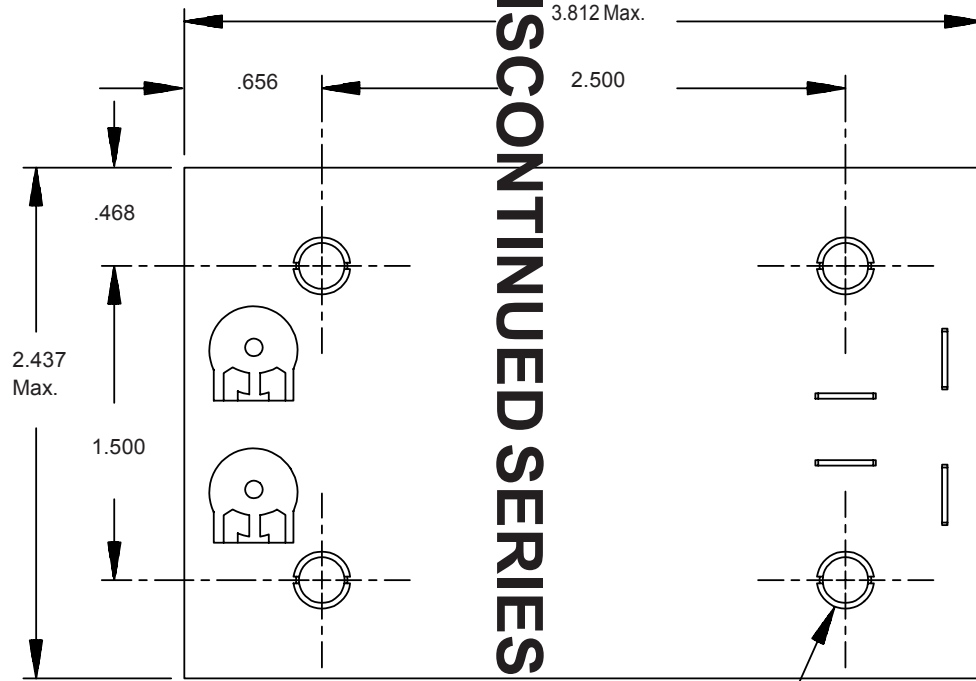


OFF/ON RECYCLE - CRS

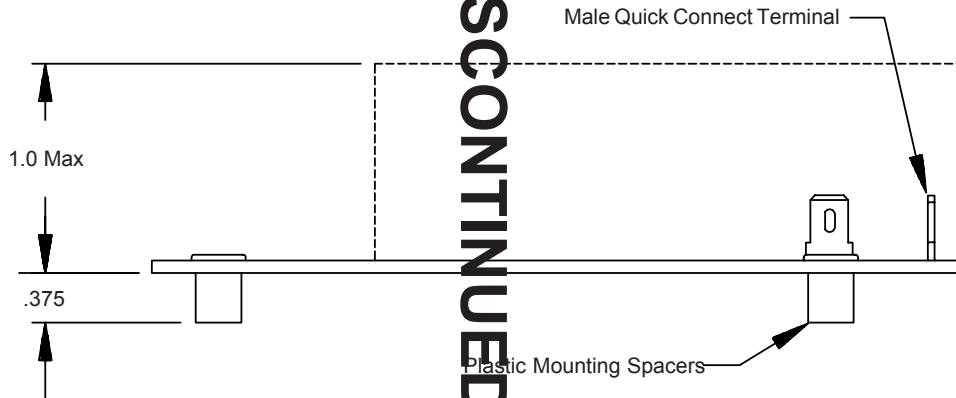
Upon application of power to the input terminals, the **OFF** delay begins. Upon completion of the **OFF** delay, the output contact transfers and the **ON** delay begins. Upon completion of the **ON** delay, the output contact reverts back to its original position and the cycle repeats. Reset is accomplished by removal of input power.



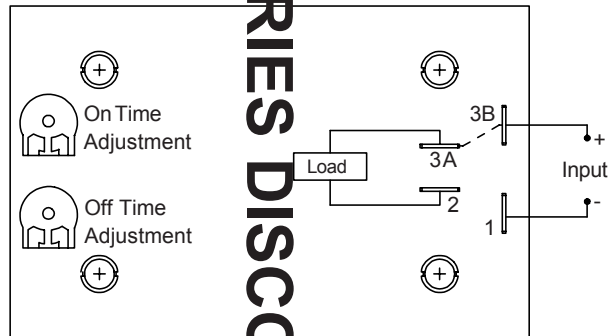
DIMENSIONS



#6 Screw Clearance Place (4 Places)



CONNECTION DIAGRAM



ORDERING INFORMATION

SERIES	TERMINATION	INPUT VOLTAGE	ADJUSTMENT	OFF TIME	ON TIME
CDIS CRS	2 - 3/16" Quick Connect 3 - 1/4" Quick Connect	1 - 12 VDC 2 - 24/28 VDC 4 - 24 VAC 5 - 120 VAC 6 - 230 VAC	0 - Knob 1 - Fixed	See Time Delay range Chart	

DISCONTINUED SERIES DISCONTINUED SERIES DISCONTINUED