



P.O.Box 2956 · Syracuse · New York · 13220
 Phone: (315) 433-1150 Fax: (315) 433-1521
 Toll Free US & Canada (800) 334-0837
 Email: sales@infitec.com

PCS SERIES HIGH PRECISION AC PHASE CONTROL

FEATURES

- Fully Solid State
- 0 To 100% Adjustment Range
- Extremely Stable Over Voltage & Temperature Variations
- Insensitive To Tolerances In Potentiometer Value
- Standard 1/4" Quick Connect Termination
- Encapsulated To Withstand Harshest Environments
- Small Size

SPECIFICATIONS

1. Input.

- 1.1 Operating voltage: 24, 120, 230 VAC & selectable 120/230 VAC
- 1.2 Tolerance: $\pm 20\%$ of nominal
- 1.3 Frequency: 50 - 60 Hertz

2. Output.

- 2.1 Type: Solid state
- 2.2 Rating:
 - (Blank)-1 amp steady state, (10 amp inrush, 50 mA. min.)
 - A-6 amp steady state, (60 amp inrush, 200 mA. min.) *
 - B-10 amp steady state, (100 amp inrush, 225 mA. min.) *
 - C-15 amp steady state, (150 amp inrush, 250 mA. min.) *
 - D-2.5 amp steady state, (50 amp inrush, 150 mA. min.)
 - H-25 amp steady state, (250 amp inrush, 500 mA. min.) ■
 - * Maximum plate temperature: 85°C
 - Maximum plate temperature: 60°C

For external output option, (3) 12" wire leads are provided to connect to an externally mounted output triac.

(Please consult factory for specific application assistance)

- 2.3 Voltage drop: 2.5 volts typical at rated current
- 2.4 External resistance: 1 megohm = minimum output voltage (24 VAC units) 100K ohm = minimum output voltage
- 2.5 Range: 0 to 100% of line voltage, minus voltage drop
- 2.6 Stability vs. voltage & temperature: $\pm 0.5\%$

3. Protection.

- 3.1 Transient: ± 1500 volts for 150 microseconds
- 3.2 Dielectric breakdown: 1500 volts RMS minimum

4. Mechanical.

- 4.1 Mounting: One #8 or #10 screw
- 4.2 Termination: 1/4" quick connect terminals
- 4.3 Style: Surface mount / encapsulated with heat sink surface *(see dimensional drawing)

5. Environmental.

- 5.1 Operating temperature: -20°C to +80°C
- 5.2 Storage temperature: -30°C to +85°C
- 5.3 Humidity: 95% relative, non-condensing

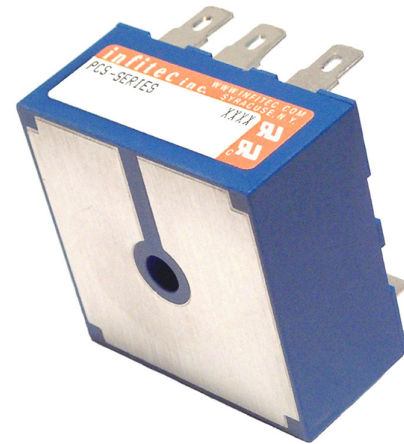
MODE OF OPERATION

AC Phase Control

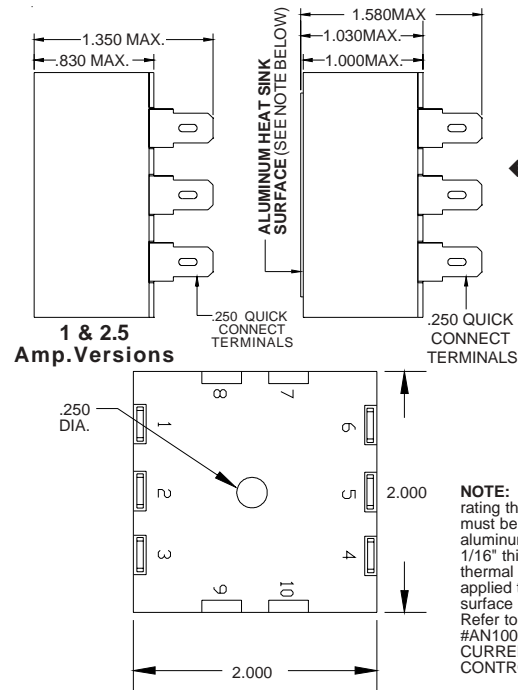
Power is applied to the input terminals at all times. Adjusting the control potentiometer changes the voltage across the load. Adjustment range 0-100% minus (Vline - Vload)

ORDERING INFORMATION

SERIES	INPUT VOLTAGE	OUTPUT RATING
PCS	4 - 24 VAC 5 - 120 VAC 6 - 230 VAC 7 - 120/230 VAC	(Blank) - 1 Amp A - 6 Amp B - 10 Amp C - 15 Amp D - 2.5 Amp H - 25 Amp X - External Output Triac



DIMENSIONS



CONNECTION DIAGRAM

