



P.O. Box 2956 · Syracuse · New York · 13220  
 Phone: (315) 433-1150 Fax: (315) 433-1521  
 Toll Free US & Canada (800) 334-0837  
 Email: sales@infitec.com

# ISSA SERIES SOLID STATE AC CURRENT SENSOR

## FEATURES

- Complete Isolation Between Sensed Current And Output Circuit
- 2 Terminal In-Line Control Circuit Wiring
- 100% Solid State
- 5% Hysteresis To Prevent Rapid Switching
- Encapsulated To Withstand Harshesht Environments
- Designed To Sense The Beginning or Ending of a Function Via Monitored Current Flow
- UL/cUL Recognized

## SPECIFICATIONS

### 1. Input.

- 1.1 Type: Sensed AC current via isolated toroid sensor
- 1.2 Sense voltage: Up to 600 VAC
- 1.3 Sense range: 1 pass - 2.0 to 20.0 amperes  
 2 passes - 1.0 - 10.0 amperes  
 4 passes - 0.5 - 5.0 amperes  
 (see connection diagram)

### 2. Output.

- 2.1 Control circuit voltage: 24, 120 & 230 VAC
- 2.2 Tolerance: ± 20% of nominal
- 2.3 Frequency: 50 - 60 Hertz
- 2.4 Type: Solid State
- 2.5 Form: SPST N.O.
- 2.6 Rating: 1 ampere (10 amperes inrush)
- 2.7 Life: 100,000,000 operations minimum under full load

### 3. Trip Point.

- 3.1 Fixed: Specify in ordering information
- 3.2 Knob adjustable: User settable throughout sensing range (see 1.3)
- 3.3 Tolerance: -0%, +30%
- 3.4 Hysteresis: 5%
- 3.5 Trip point vs. voltage & temperature: ± 5%

### 4. Protection.

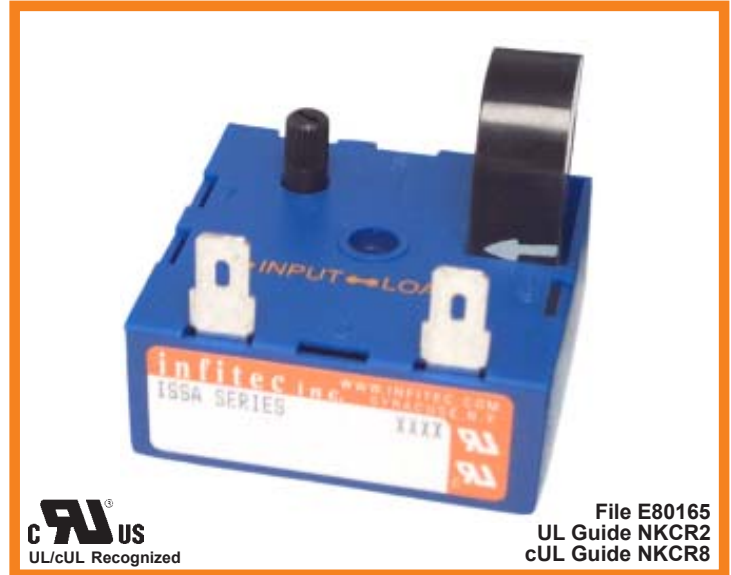
- 4.1 Transient: ±1500 volts for 150 microseconds
- 4.2 Dielectric breakdown: 1500 volts RMS min. case to mounting surface and 2500 volts RMS min. coil to control circuit terminals

### 5. Mechanical.

- 5.1 Mounting: One #8 or #10 screw
- 5.2 Control circuit termination: (2) 1/4" quick connect
- 5.3 Style: Surface mount/encapsulated

### 6. Environmental.

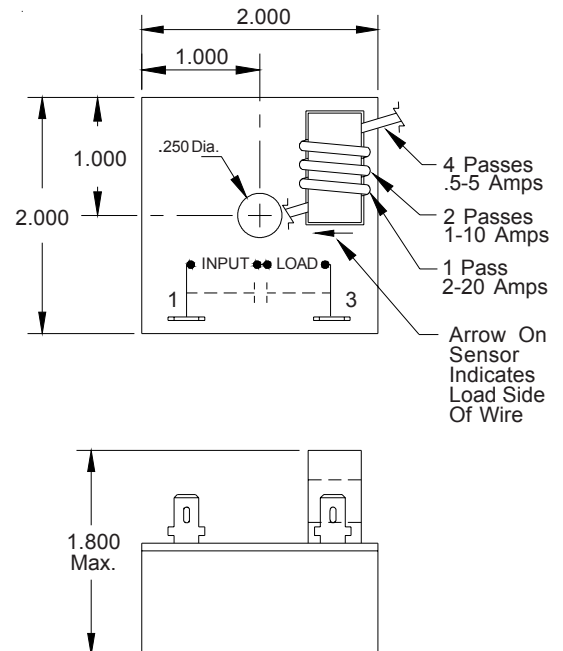
- 6.1 Operating temperature: -20°C to +80°C
- 6.2 Storage temperature: -40°C to +85°C
- 6.3 Humidity: 95% relative non-condensing



## MODE OF OPERATION AC CURRENT SENSOR

Power is applied to the control circuit at all times. When the level of current flow in the circuit being monitored is greater than the trip point, the current sensor's output circuit switches on when the current flow in the circuit being monitored drops below the trip point, the control circuit switches off.

## DIMENSIONS & CONNECTIONS



## ORDERING INFORMATION

SERIES	CONTROL CIRCUIT VOLTAGE	TRIP POINT ADJUSTMENT	TRIP POINT SETTING (Fixed Adj. Only)
ISSA	4 - 24 VAC 5 - 120 VAC 6 - 230 VAC	0 - Knob 1 - Fixed	Specify Trip Current To Nearest 1 Ampere