



P.O. Box 2956 · Syracuse · New York · 13220
 Phone: (315) 433-1150 Fax: (315) 433-1521
 Toll Free US & Canada (800) 334-0837
 EMAIL: sales@infitec.com

UMS300 ENCAPSULATED UNIVERSAL TIMING CONTROL

FEATURES

- 65° Ambient Operation
- External Adjustable From .2 To 8 Minutes
- Encapsulated Construction
- 2 Terminal Connection
- High Reliability
- No First Cycle Effect
- Low Cost
- 19-264 Volts AC Or DC Operation
- 1 Unit To Stock
- UL/cUL Recognized

SPECIFICATIONS

1. Time Delay.

- 1.1 Type: External adjust
- 1.2 Range: 0.2 to 8 minutes (12 seconds to 480 seconds)
*Note: 3 Megohm RT = maximum time delay.
 For shorter delays, every 6.5K of resistance provides one second (6.5 k/second)*
- 1.3 Repeat accuracy: ± 2% under fixed conditions
- 1.4 Reset time: 50 milliseconds maximum
- 1.5 Recycle time: 100 milliseconds during timing, 50 milliseconds after timing

2. Input.

- 2.1 Operating voltage: 19 to 264 volts AC or DC
- 2.2 Frequency: 50 - 60 Hertz

3. Output.

- 3.1 Type: Solid state
- 3.2 Form: SPST
- 3.3 Rating: 1 ampere maximum (40mA minimum or consult factory). 10 ampere inrush
- 3.4 Life: 100,000,000 operations minimum

4. Protection.

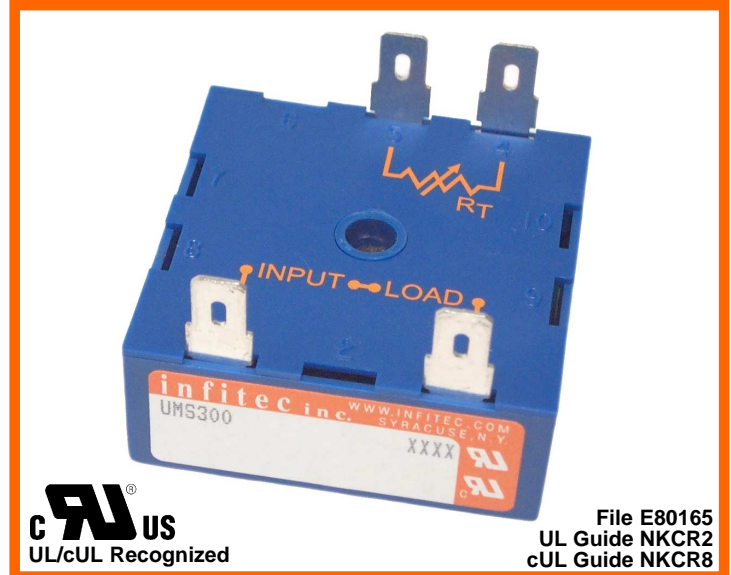
- 4.1 Transient: ±1500 volts for 150 microseconds
- 4.2 Dielectric breakdown: 1500 volts RMS minimum

5. Mechanical.

- 5.1 Mounting: One #8 or #10 screw
- 5.2 Termination: 1/4" quick connect terminals
- 5.3 Style: Surface mount/encapsulated

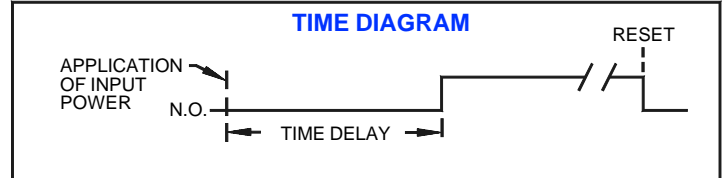
6. Environmental.

- 6.1 Operating temperature: -20°C to +60°C
- 6.2 Storage temperature: -30°C to +85°C
- 6.3 Humidity: 95% relative non-condensing

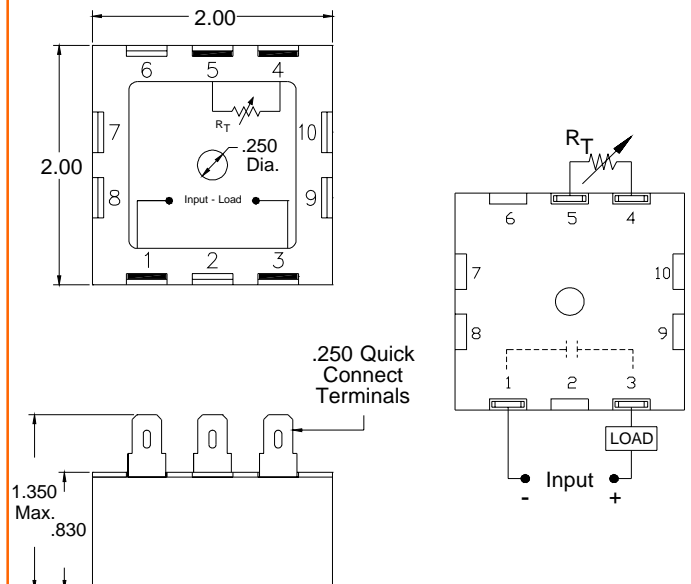


MODE OF OPERATION - SERIES DELAY ON MAKE - UMS

Upon application of power to the input terminals, the time delay begins. At the completion of the pre-selected time delay, the output contact transfers. Reset is accomplished by removal of input power. There is no false output when reset during timing.



DIMENSIONS & CONNECTIONS



ORDERING INFORMATION

ORDER P/N: UMS300

File E80165
 UL Guide NKCR2
 cUL Guide NKCR8